



What's New: Version 1.6.0	2
Background.....	2
Update cycles for interactive wildfire map features (layers).....	2
Downloading and using the mobile app	3
Latest news	3
Wildfire map	4
Basic functionality.....	4
Additional layers	4
Turn LAYERS on and off	6
“Near me” function	6
Search feature	7
Change base maps	7
Find more information about features	8
WILDFIRE WEATHER	8
WILDFIRE LEARNING	9
Report a fire.....	10
Notifications	14
Current Statistics	15
Advisories	16
Feedback.....	17
Help.....	17
Disclaimer	18

WHAT'S NEW: VERSION 1.6.0

The BC Wildfire Service Public Mobile App has released its latest version which boasts multiple exciting new features. Users can:

- Report signs of wildfire by submitting electronic reports through the “Report a Fire” button,
- View new educational information about bans and restrictions, drones, and fire weather under the “Wildfire Learning” tab,
- Receive more accurate and timely push notifications for ‘near me’ and/or ‘saved locations’ and
- Watch mobile app tutorial videos under the “Help” section

BACKGROUND

The official BC Wildfire Service mobile app allows near real-time wildfire information to be viewed directly on mobile devices. This mobile-friendly option complements the BC Wildfire Service’s website and social media channels. Features include:

- Advisories (Evacuation Orders/Alerts and Fire Bans/Restrictions)
- Current Wildfire Statistics
- Wildfire Learning
- Latest News
- “Report a Fire” Functionality
- Notifications
- Interactive Wildfire Map:
 - Drive BC events
 - BC Wildfire – Active Fires
 - BC Wildfire – Declared Out
 - BC Wildfire Fire Perimeters
 - BC Wildfire Fire Centre Boundaries
 - BC Wildfire Fire Danger Rating
 - BC Wildfire Bans and Prohibitions
 - BC Wildfire Area Restrictions
 - BC Parks and Recreation Site Information (closures)
 - Evacuation Alert and Evacuation Order Information
 - “Near Me” Functionality
 - Search Functionality
 - Current Weather Conditions
 - Current Precipitation Radar
 - Smoke Forecast, Hourly
 - Precipitation Forecast, Hourly

UPDATE CYCLES FOR INTERACTIVE WILDFIRE MAP FEATURES (LAYERS)

- The Active Fires, Fire Perimeters, Bans and Prohibitions, and Area Restrictions layers are updated on a one-hour cycle, on the half-hour (1:30, 2:30, 3:30, 4:30, and so on throughout the day).
- The Evacuation Orders and Evacuation Alerts data are updated when information from the local authority (e.g., Regional Districts, First Nations) is received and updated.
- All other non-wildfire data provided on the map is updated by the custodians of that data. Once that data is received by the BC Wildfire Service, it will be reflected on the map.

DOWNLOADING AND USING THE MOBILE APP

The BC Wildfire Service mobile app is available for Apple (iOS) and Android devices and is free to download in the App Store and Google Play. The app requires the user to have mobile data capability or a Wi-Fi connection. Location services are also required when using the “Near Me” function.

For full functionality, the user must ensure that the latest version available is downloaded on their mobile device.

Apple (iOS): Go to the App Store, search for “BC Wildfire Service” (select the “Official BC Wildfire Info” version) and install the app. The BC Wildfire Service mobile app can also be downloaded directly from the App Store (iOS) [here](https://apps.apple.com/us/app/bc-wildfire-service/id1477675008?ls=1) (<https://apps.apple.com/us/app/bc-wildfire-service/id1477675008?ls=1>)



Android: Go to Google Play Store, search for “BC Wildfire Service” (select the “Official BC Wildfire Info” version) and install the official app. The BC Wildfire Service mobile app can also be downloaded directly from the Google Play Store [here](https://play.google.com/store/apps/details?id=ca.bc.gov.WildfireInformation&hl=en) (<https://play.google.com/store/apps/details?id=ca.bc.gov.WildfireInformation&hl=en>)

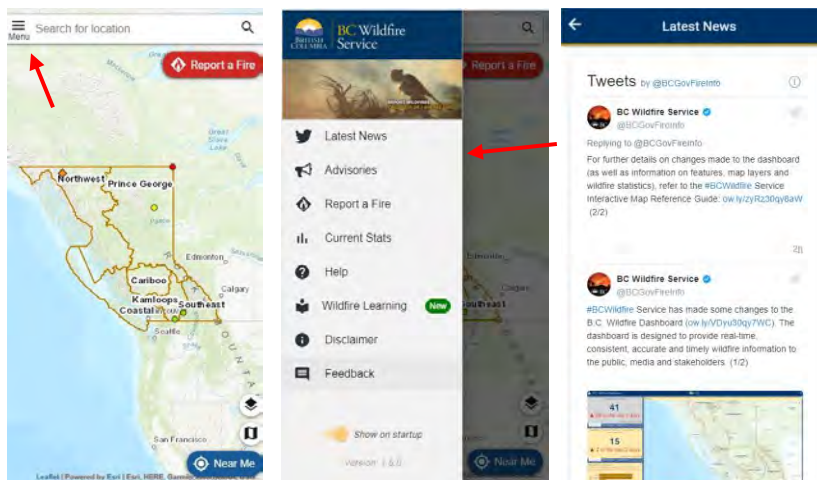


Permissions: Upon installation, the BC Wildfire Service mobile app may request access to the user’s device’s camera, location, microphone and storage. In order to enjoy all of the app’s features, permission must be granted. Keep in mind that the app requires access to a mobile network or a Wi-Fi connection to launch.

LATEST NEWS

The Latest News feature links directly to the BC Wildfire Service’s Twitter feed. Here, users can view the BC Wildfire Service’s latest informational tweets. A personal Twitter account is not required to view this feed.

To access the Latest News feature, select the “Menu” icon (the three horizontal bars at the top left) and select “Latest News” from the menu.



WILDFIRE MAP

The Wildfire Map offers the same features that are available through the B.C. Wildfire Dashboard at www.bcwildfire.ca. The Wildfire Map includes:

- Drive BC events
- BC Wildfire – Active Fires
- BC Wildfire – Declared Out
- BC Wildfire Fire Perimeters
- BC Wildfire Fire Centre Boundaries
- BC Wildfire Fire Danger Rating
- BC Wildfire Bans and Prohibitions
- BC Wildfire Area Restrictions
- BC Parks and Recreation Site Information (closures)
- Evacuation Alert and Evacuation Order Information
- “Near Me” Functionality
- Search Functionality
- Current Weather Conditions
- Current Precipitation Radar
- Precipitation Forecast – Hourly 🔄 (animated)
- Smoke Forecast – Hourly 🔄 (animated)

BASIC FUNCTIONALITY

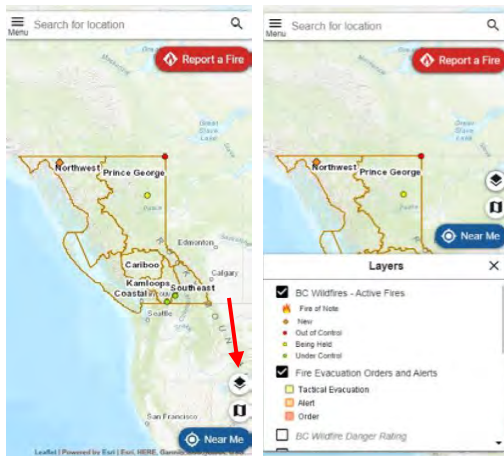
Zoom in to an area of the map by touching two fingers to the screen then moving them apart or by double-tapping the screen. To **zoom out**, touch two fingers to the screen and move them together.

To **move around** the map, touch one finger to the screen and drag the screen to see surrounding areas.

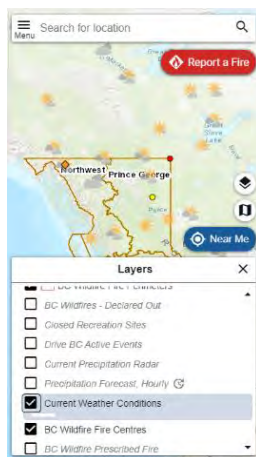
ADDITIONAL LAYERS

The Wildfire Map default layers include Fire Centre Boundaries and Active Wildfire locations.

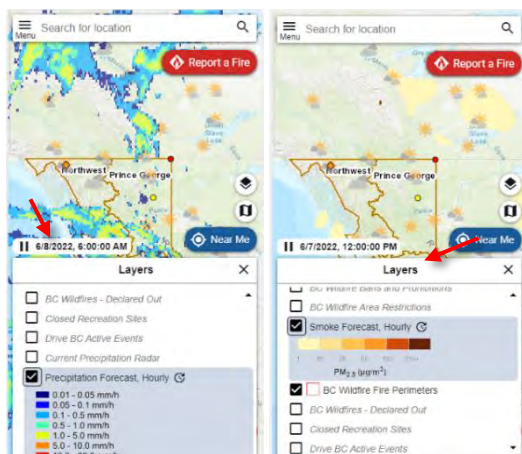
To add new layers, select the “Layers” icon (📁) in the bottom right, and place a checkmark in the boxes next to the layers to display them. Some of the layers may not contain information yet (e.g., there may not be information on Bans and Restrictions if none are in effect).



If the Current Weather Conditions layer is enabled, the map will display icons which depict the current weather in various areas of the province.



If the Precipitation Forecast or Smoke Forecast layers are enabled, the map overlay will shade the data in different colours which are defined under the legend. The ⏸ indicates that the layer is animated and you are able to pause the animation to display specific data at a given time.



Additional layer information

Data displayed on the Wildfire Map's layers come from various sources. For more information about specific layers, please use the links below.

[Drive BC events](#): Published by the Ministry of Transportation and Infrastructure

[BC Wildfire – Active Fires](#): Published by the Ministry of Forests, Lands, Natural Resource Operations and Rural Development – BC Wildfire Service

[BC Wildfire – Declared Out](#): Published by the Ministry of Forests, Lands, Natural Resource Operations and Rural Development – BC Wildfire Service

[BC Wildfire Fire Perimeters](#): Published by the Ministry of Forests, Lands, Natural Resource Operations and Rural Development – BC Wildfire Service

[BC Wildfire Fire Centre Boundaries](#): Published by the Ministry of Forests, Lands, Natural Resource Operations and Rural Development – BC Wildfire Service

[BC Wildfire Fire Danger Rating](#): Published by the Ministry of Forests, Lands, Natural Resource Operations and Rural Development – BC Wildfire Service

[BC Wildfire Area Restrictions](#): Published by the Ministry of Forests, Lands, Natural Resource Operations and Rural Development – BC Wildfire Service

[Recreation Sites, Reserves and Interpretative Forests Information \(closures\)](#): Published by the Ministry of Forests, Lands, Natural Resource Operations and Rural Development – Recreation Sites and Trails BC

[Evacuation Alert and Evacuation Order Information](#): Published by the Ministry of Forests, Lands, Natural Resource Operations and Rural Development – GeoBC

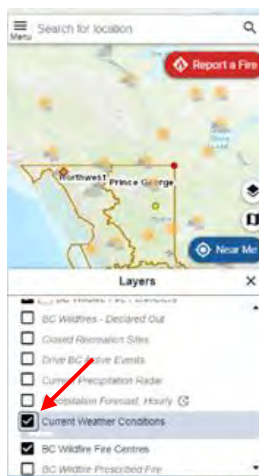
[Current Weather Conditions](#): Published by the Meteorological Service of Canada

[Radar Precipitation Rate](#): Published by the Meteorological Service of Canada

[Smoke Forecast, Hourly](#): Published by BlueSky Canada

TURN LAYERS ON AND OFF

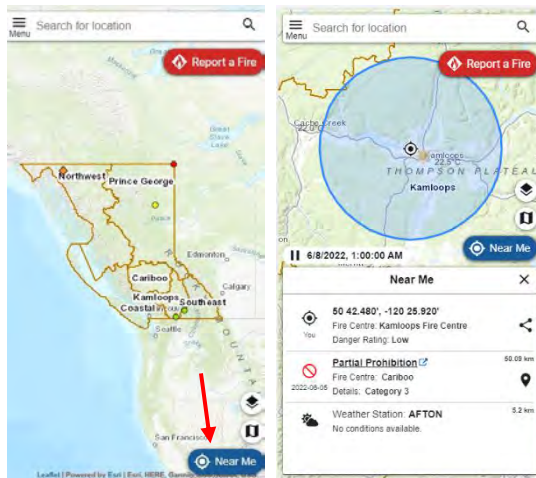
To turn layers on or off, click the box next to the layer you'd like to display. A box with a checkmark will display, a blank box will not be displayed.



"NEAR ME" FUNCTION

The "Near Me" function provides a listing of all information available through the app within a 50-kilometre radius of the user's location. In order to use this function, a device's location services must be turned on. To launch the

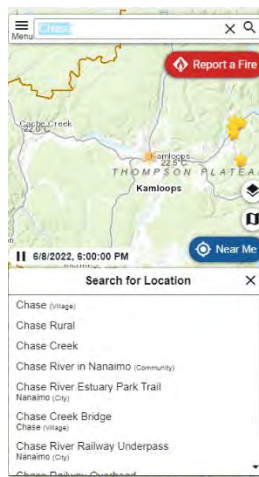
“Near Me” function, select the location icon (📍) in the bottom right-hand corner of the wildfire map. It may take a few moments to process a request, depending on the amount of wildfire activity. The “Near Me” function will produce a list of results that can be expanded or collapsed on the screen. To exit the “Near Me” function, select the “X” and the list will be cleared.



SEARCH FEATURE

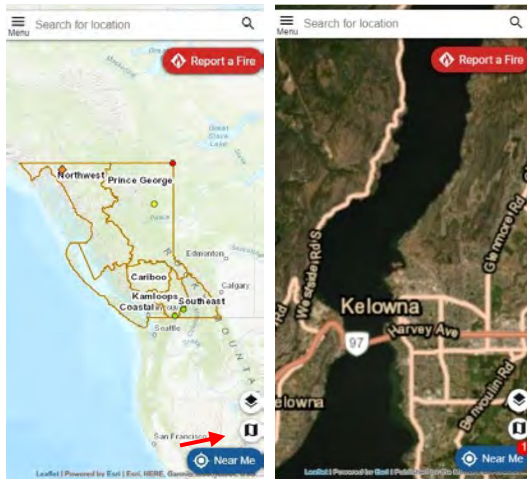
Select the “Search” icon (the magnifying glass) at the top right of the wildfire map. Users can search by an active fire’s name or location (e.g., Magee Road Fire, Squamish).

The screen view can be collapsed or expanded. Selecting “X” clears the search.



CHANGE BASE MAPS

Users can change from an imagery base map to a topographic base map by selecting the map icon (🗺️) in the bottom right of the application.





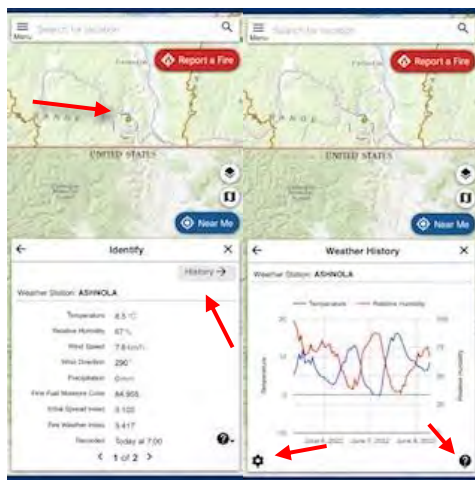
FIND MORE INFORMATION ABOUT FEATURES

When users click on a feature (e.g., an active wildfire), an information window will appear with additional information about that feature. To exit, select “X”.



WILDFIRE WEATHER

To access Wildfire Weather, click on the map and identified features will be available. One feature is the current information from the closest BCWS weather station will be displayed. To look at other metrics or historical information (three days or 24 hours) click on the “History” button. To access different metrics, click the settings button , to access the help select the . Weather functionality is accessible from the “Near Me” tool as well.

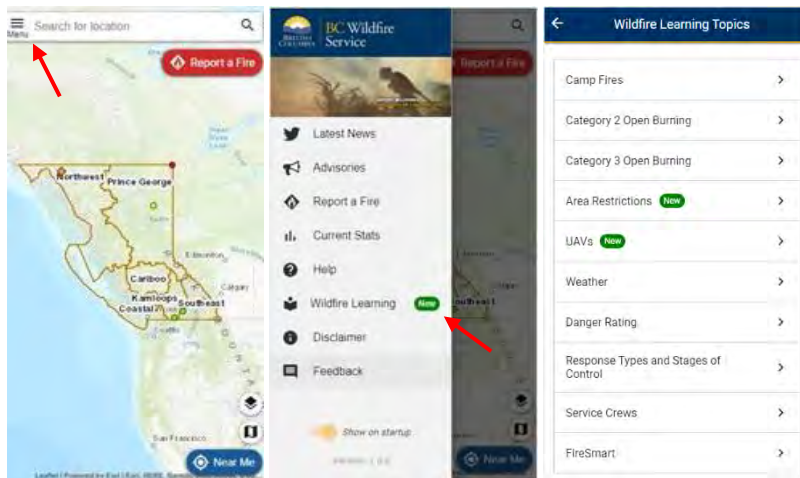


Clicking on the chart will give you the value of the feature for that time. Changing the metrics will change the chart. You can only have 2 metrics displayed at a time.



WILDFIRE LEARNING

To access “Wildfire Learning”, click on menu and select “Wildfire Learning”. Click on the various topic tabs to access more information on those subjects.

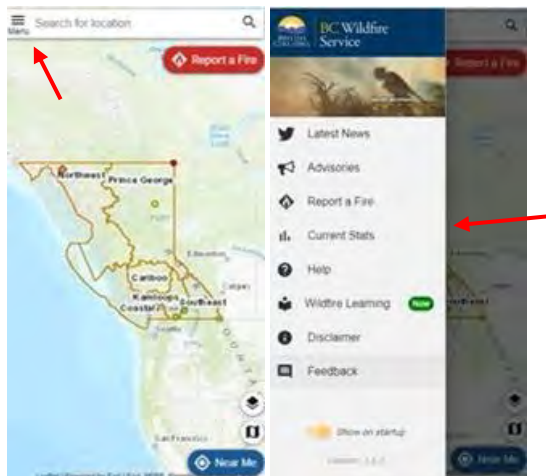


REPORT A FIRE

To report a wildfire, select the “Menu” icon (the three horizontal bars at the top left) and select “Report a Fire”.

The “Report a Fire” feature will automatically generate coordinates of the user’s current location, which will appear under the wildfire reporting phone numbers. Provincial Wildfire Reporting Centre staff will ask for these coordinates when the user reports a wildfire. This feature also indicates what sort of questions a person may be asked when reporting a wildfire.

On the “Report a Fire” screen, users can scroll with their finger to view more information. Use the back arrow to return to the map.



Users without internet or a data connection will only be presented with the “Call to report a fire” option. Options unavailable without an online connection will appear in grey.

The first screen shows two main options: "Submit an Electronic Report a Fire and upload photo" and "Call to report a fire". The second screen shows the same options but with a note: "Electronic reporting is not available because your device has no network connection." The third screen lists prompts for: Location, Size, Rate of spread, and Fuel.

Report a Fire

To report a wildfire in British Columbia, please click on one of the following options:

Submit an Electronic Report a Fire and upload photo

OR

Call to report a fire

Report a Fire

To report a wildfire in British Columbia, please click on one of the following options:

Submit an Electronic Report a Fire and upload photo

Electronic reporting is not available because your device has no network connection.

OR

Call to report a fire

Report a Fire

To report a wildfire or irresponsible behaviour that could start a wildfire in British Columbia, please call as soon as possible. Information from the public is crucial to the effectiveness of our response.

1-800-663-5555 or *5555 from a cell phone

Information you will be prompted for:

Location: Where is the fire? How far up the hillside? Closest intersection?

Your current location is (49 0.918', -119 26.190')

Size: Metres? Hectares? Size of a house? Size of a football field?

Rate of spread: How quickly is the fire spreading?

Fuel: What is burning? Grass, bushes, trees?

Step 1:

To continue with a fire report, select “Submit an Electronic Report a Fire and upload photo”.

If users do not agree to share information with the BC Wildfire Service, then they will be redirected to the “Call to report a fire” option.

The first screen is identical to the previous one. The second screen asks for agreement to share information with BC Wildfire Service, with options "I AGREE" and "I DO NOT AGREE". The third screen shows the same prompts as the first screen, but with a "Next" button at the bottom.

Report a Fire

To report a wildfire in British Columbia, please click on one of the following options:

Submit an Electronic Report a Fire and upload photo

OR

Call to report a fire

Report a Fire - Agreement

Do you agree to share information with BC Wildfire Service?

Click on the button of your choice and then click Next:

I AGREE to share information provided in this report with BC Wildfire Service.

OR

I DO NOT AGREE to share information provided in this report with BC Wildfire Service.

< Back Step 1 of 6 Next >

Report a Fire - Agreement

Do you agree to share information with BC Wildfire Service?

Click on the button of your choice and then click Next:

I AGREE to share information provided in this report with BC Wildfire Service.

OR

I DO NOT AGREE to share information provided in this report with BC Wildfire Service.

< Back Step 1 of 6 Next >

Report a Fire

To report a wildfire or irresponsible behaviour that could start a wildfire in British Columbia, please call as soon as possible. Information from the public is crucial to the effectiveness of our response.

1-800-663-5555 or *5555 from a cell phone

Information you will be prompted for:

Location: Where is the fire? How far up the hillside? Closest intersection?

Your current location is (49 0.918', -119 26.190')

Size: Metres? Hectares? Size of a house? Size of a football field?

Rate of spread: How quickly is the fire spreading?

Fuel: What is burning? Grass, bushes, trees?

Step 2:

Once users agree to share information with the BC Wildfire Service, they will be prompted to with the option to share their name and phone number, but these are not required fields to proceed with reporting a fire.

The user can indicate if they are available in the next 20 minutes (at their provided number) for a call back from BCWS to gather more information. This is optional.

Report a Fire - Agreement

Do you agree to share information with BC Wildfire Service?

Click on the button of your choice and then click Next:

I AGREE to share information provided in this report with BC Wildfire Service.

OR

I DO NOT AGREE to share information provided in this report with BC Wildfire Service.

Back

Step 1 of 6

Next

Report a Fire - Contact Info

Who is submitting the report?

This information is optional, it is not required.

Name

Phone Number

Are you available for a call-back?

☐ Yes, I am available in the next 20 minutes, for a call back from BCWS to gather more information.

Personal information is collected by the BC Wildfire Service under section 26 (c) of the Freedom of Information and Protection of Privacy Act for the purpose of managing wildfire incidents. Should you have questions about the collection or use of this information please contact: BC Public Mobile App BCWS.PublicMobileApp@gov.bc.ca

Back

Step 2 of 6

Next

Step 3:

Users will then be directed to provide images of the fire. **Users should avoid uploading any images that include people or personal information.**

Photos must be taken in real time and can not be uploaded from the users' files or photo storage. Once a photo is uploaded, users have the option to retake or use the photo. Once photos are added they can't be removed. Taken photos will not be saved to the users' phone storage.

The estimated distance from where users suspect the fire is can be estimated by a slider function near the bottom of the page.

Report a Fire - Photos

Upload a maximum of 3 photos

Please avoid uploading photos with people or personal information.

100 m 200 m 500 m 1 km 2 km 5 km 10+ km

Estimated distance to fire is: 100 m

Take Photo

Back

Step 3 of 6

Next

Report a Fire - Photos

Upload a maximum of 3 photos

Please avoid uploading photos with people or personal information.

100 m 200 m 500 m 1 km 2 km 5 km 10+ km

Estimated distance to fire is: 100 m

Take Photo

Back

Step 3 of 6

Next

Step 4:

Users will be asked to place the yellow crosshair of the location of the fire, to the best of their knowledge, in relation to their location. The user's location is indicated by the blue pin, and the yellow site indicates the estimated fire location. Users will move the map rather than placing the pins.



Step 5:

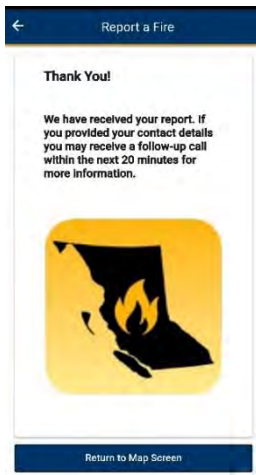
Users will then be asked to give details on the fire, to the best of their knowledge, including size, rate of spread, visibility of flames, smoke colour, current weather conditions, nearby assets, signs of response, and any other relevant information. Other relevant information can include any details the user may consider to be important such as recent lightning strike in the area.

Step 6:

After completing the report and pressing the “submit” button, users will be presented with a “Thank You!” screen.

At this point the report has been successfully submitted, and users can return to the map screen or close the application. The report can not be changed at this point and are not saved within the application.

If the user indicated they were available, they may receive a call within the next twenty minutes.

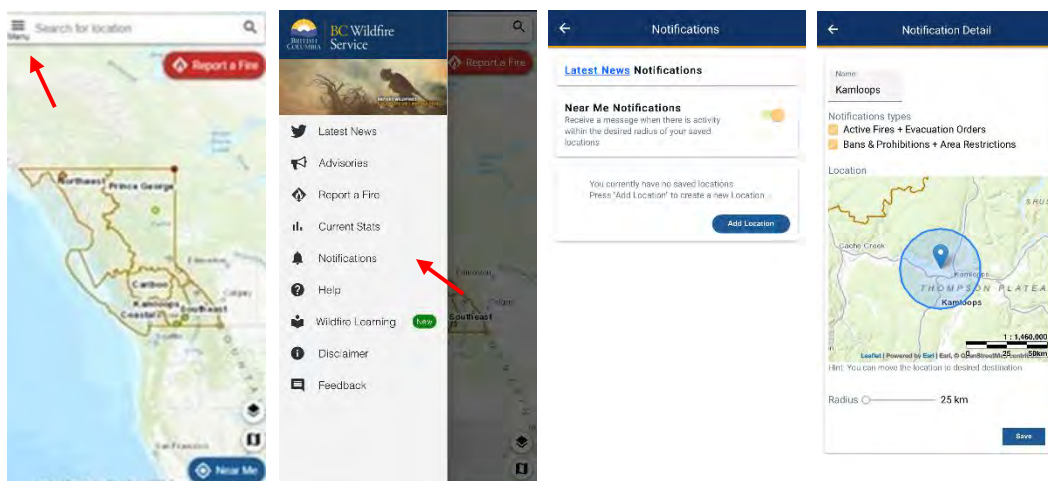


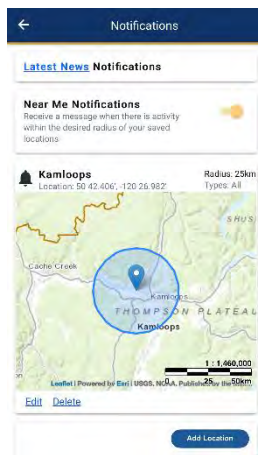
NOTIFICATIONS

To access the Notifications function, select the “Menu” icon (the three horizontal bars at the top left) and select “Notifications”. Users can adjust the type of notifications that they want to receive and set their own personal notification areas. Up to three locations can be selected for which users wish to receive notifications.

Toggle notifications on and off for:

- Near Me Notifications
- Locations of the users’ preference, include a name and the radius of notifications
 - Give the notification area a name
 - Move the blue location point to the desired location
 - Adjust the search radius
 - Scroll down and save
 - Users can edit, adjust or delete the location at any time





CURRENT STATISTICS

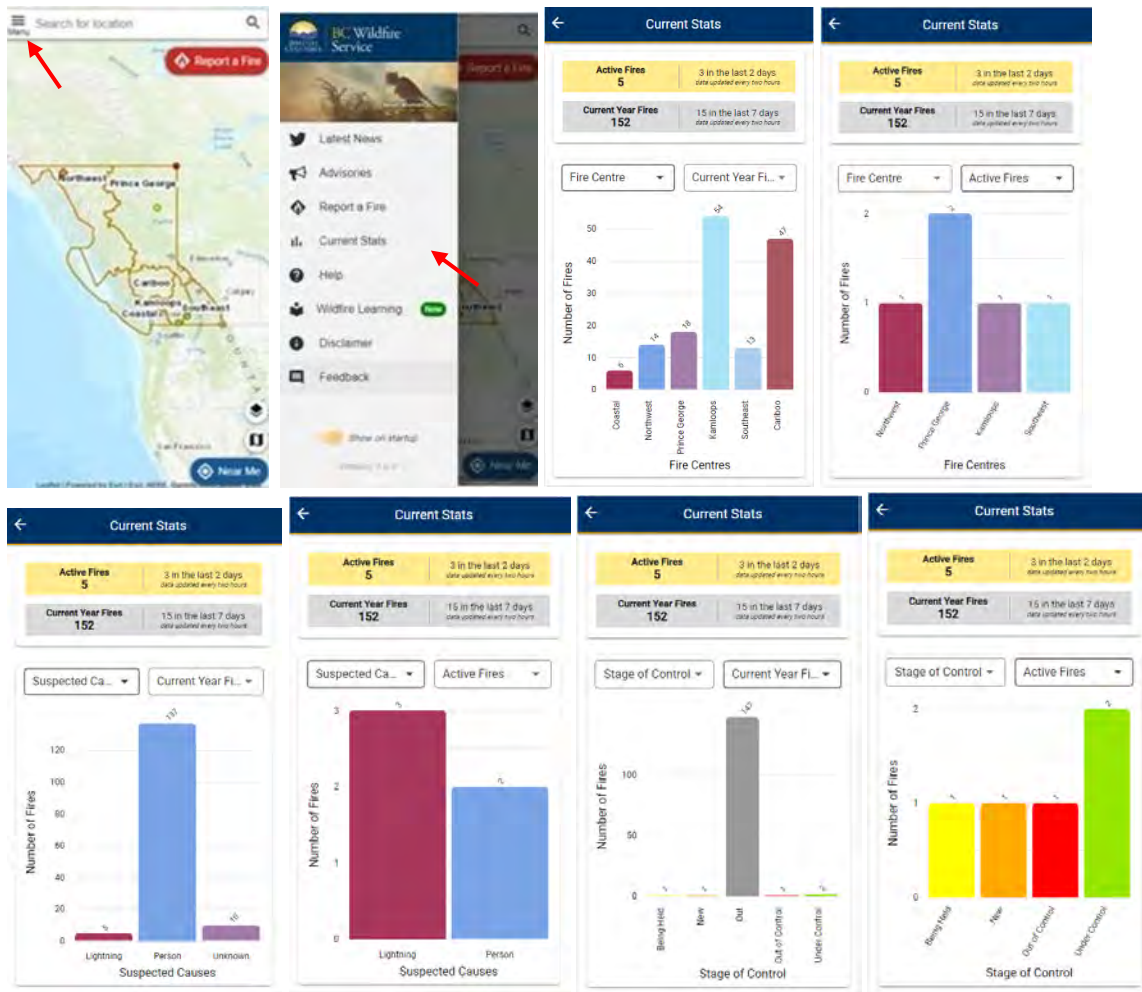
To access current wildfire statistics, select the “Menu” icon (the three horizontal bars at the top left) and select “Current Stats”.

The “Current Stats” screen displays:

- a rolling total of all wildfires for the current fire season (which runs from April 1 to March 31 of the following year)
- a rolling total of wildfires that are currently active
- a rolling total of wildfires detected in the last two days

The statistics can be filtered by:

- fire centre
- suspected cause
- stage of control
- current year fires
- active fires

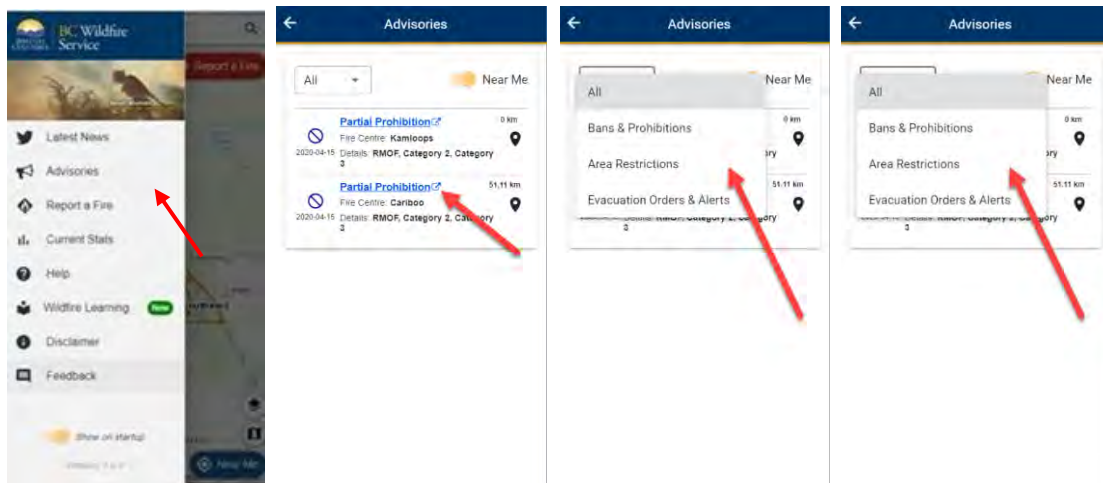


ADVISORIES

To access Advisories, select the “Menu” icon (the three horizontal bars at the top left) and select “Advisories”.

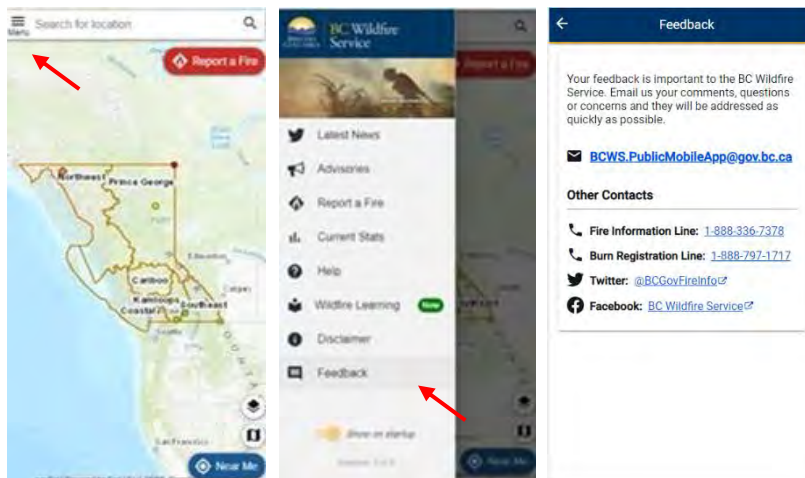
Advisories are available for Bans and Prohibitions, Area Restrictions, and Evacuation Orders and Evacuation Alerts. Additional information pertaining to each advisory is available through the “Advisories” screen.

Advisories can be viewed with the “Near Me” function turned on or off. Viewing advisories with the “Near Me” function turned on will generate all advisories within a 50-kilometre radius of the user’s location. If the “Near Me” function is turned off, this function will generate advisories for the entire province.



FEEDBACK

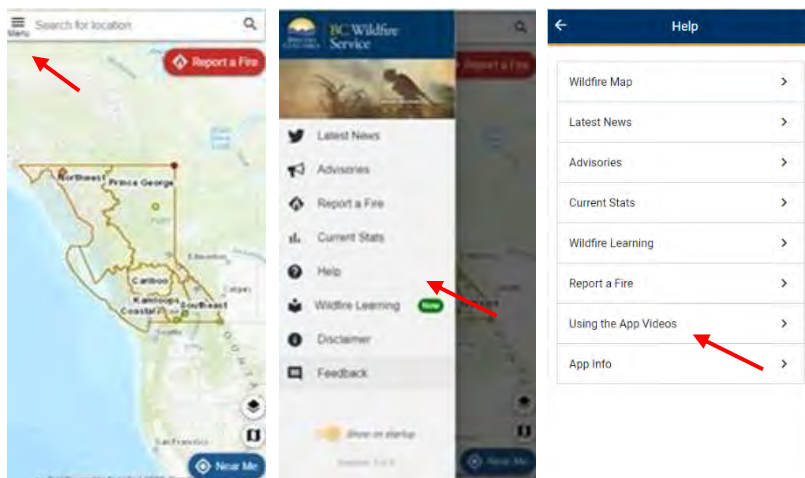
To access the Feedback function, select the “Menu” icon (the three horizontal bars at the top left) and select “Feedback”. Users can email comments or questions about the mobile app to the BC Wildfire Service and they will be addressed as quickly as possible.



HELP

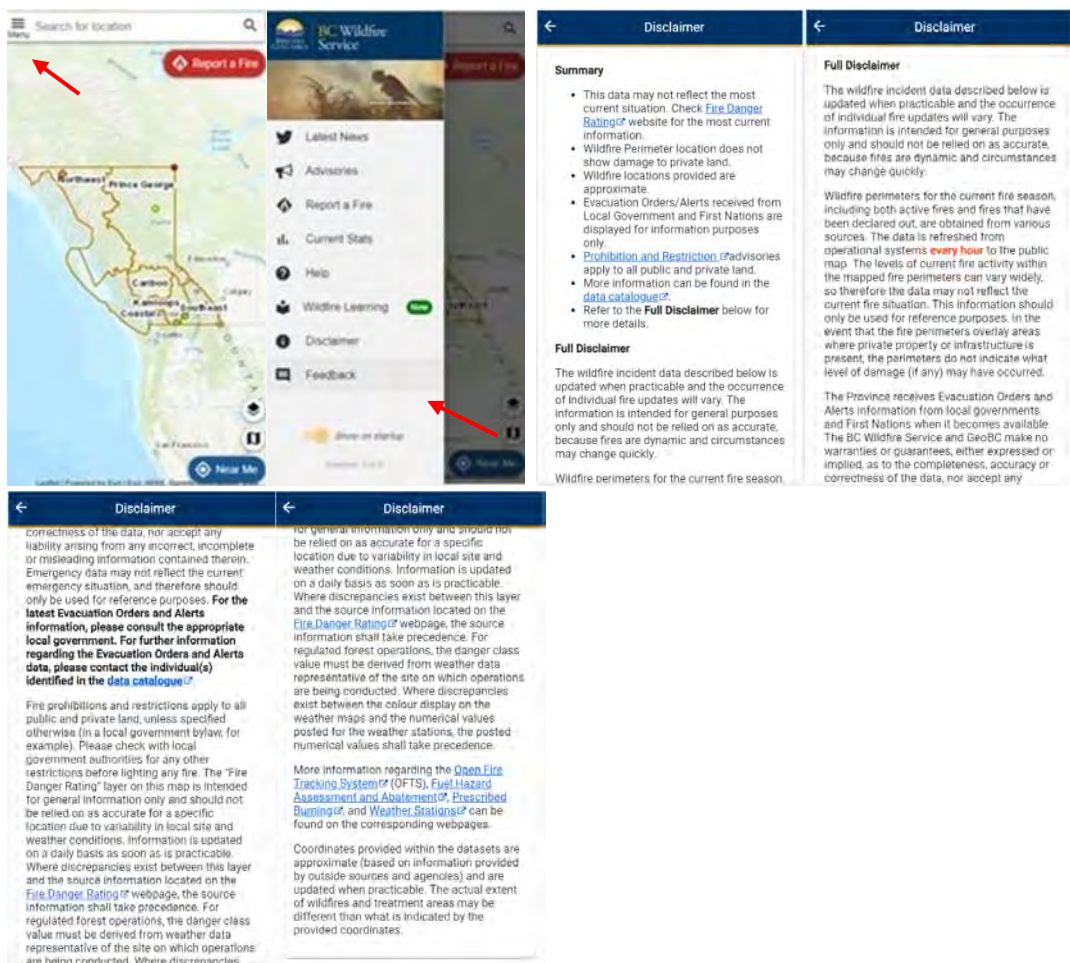
To access the “Help” function, select the “Menu” icon (the three horizontal bars at the top left) and select “Help”. The Help screen offers tips for navigating the app and provides useful definitions and additional information on wildfire-related subjects.

The BCWS Mobile App version 1.6.0 has added tutorial videos to the Help section.



DISCLAIMER

To access the Disclaimer, select the Menu icon (the three horizontal bars at the top left) and select “Disclaimer”.



The disclaimer reads:

Summary

- This data may not reflect the most current situation. Check [Fire Danger Rating](#) website for the most current information.
- Wildfire Perimeter location does not show damage to private land.
- Wildfire locations provided are approximate.
- Evacuation Orders/Alerts received from Local Government and First Nations are displayed for information purposes only.
- [Prohibition and Restriction](#) advisories apply to all public and private land.
- More information can be found in the [data catalogue](#).
- Refer to the Full Disclaimer below for more details.

Full Disclaimer

The wildfire incident data described below is updated when practicable and the occurrence of individual fire updates will vary. The information is intended for general purposes only and should not be relied on as accurate, because fires are dynamic and circumstances may change quickly.

Wildfire perimeters for the current fire season, including both active fires and fires that have been declared out, are obtained from various sources. The data is refreshed from operational systems **every hour** to the public map. The levels of current fire activity within the mapped fire perimeters can vary widely, so therefore the data may not reflect the current fire situation. This information should only be used for reference purposes. In the event that the fire perimeters overlay areas where private property or infrastructure is present, the perimeters do not indicate what level of damage (if any) may have occurred.

The Province receives Evacuation Orders and Alerts information from local governments and First Nations when it becomes available. The BC Wildfire Service and GeoBC make no warranties or guarantees, either expressed or implied, as to the completeness, accuracy or correctness of the data, nor accept any liability arising from any incorrect, incomplete or misleading information contained therein. Emergency data may not reflect the current emergency situation, and therefore should only be used for reference purposes. **For the latest Evacuation Orders and Alerts information, please consult the appropriate local government. For further information regarding the Evacuation Orders and Alerts data, please contact the individual(s) identified in the [data catalogue](#).**

Fire prohibitions and restrictions apply to all public and private land, unless specified otherwise (in a local government bylaw, for example). Please check with local government authorities for any other restrictions before lighting any fire. The "Fire Danger Rating" layer on this map is intended for general information only and should not be relied on as accurate for a specific location due to variability in local site and weather conditions. Information is updated on a daily basis as soon as is practicable. Where discrepancies exist between this layer and the source information located on the [Fire Danger Rating](#) webpage, the source information shall take precedence. For regulated forest operations, the danger class value must be derived from weather data representative of the site on which operations are being conducted. Where discrepancies exist between the colour display on the weather maps and the numerical values posted for the weather stations, the posted numerical values shall take precedence.

More information regarding the [Open Fire Tracking System \(OFTS\)](#), [Fuel Hazard Assessment and Abatement](#), [Prescribed Burning](#), and [Weather Stations](#) can be found on the corresponding webpages.

Coordinates provided within the datasets are approximate (based on information provided by outside sources and agencies) and are updated when practicable. The actual extent of wildfires and treatment areas may be different than what is indicated by the provided coordinates.